

A Technique To Avoid Tissue Impingement When Using Certain® Provide® Abutments

By Frederick Solomon, DMD, FAGD

The Provide Abutment is designed to be utilized when restorative clinicians desire a simple implant restorative procedure. This technical tip demonstrates an easy way to deliver and impress the Provide Abutment while avoiding tissue impingement (Fig 1).

Measure intra-orally to ensure there is adequate inter-occlusal space for fabricating a restoration using the Provide Abutment. Select the proper abutment diameter and height. Snap the matching color Provide Impression Coping onto the Provide Abutment. Using a diamond bur, open up a vent hole at the top of the impression coping to accommodate the Gold-Tite® Screw (IUNIHG) and Large Hex Driver Tip (RASH3N) (Fig 2).

Verify that any plastic debris is removed from the inside of the Provide Abutment to ensure that the screw will seat completely (Fig 3).

Insert the Large Hex Driver Tip into the Gold-Tite Screw and place these through the impression coping/ abutment assembly (Fig 4 and 5). Place the entire assembly into the Certain Implant and verify complete seating (Fig 6).

Using a torque device attached to the Large Hex Driver Tip, tighten the screw to 20Ncm. Remove the driver tip and block the vent hole opening with wax or a temporary filling material. Syringe a medium to heavy body impression material around the Provide Impression Coping, load the impression tray and seat in the mouth. Allow the impression material to set per the manufacturer's instructions.

Remove the impression from the mouth and place the Provide Snap Cap on the abutment. Send the case to the laboratory for fabrication of the restoration.

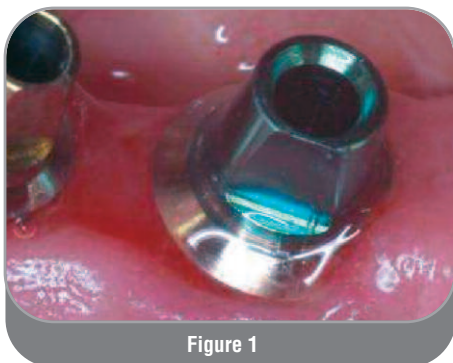


Figure 1

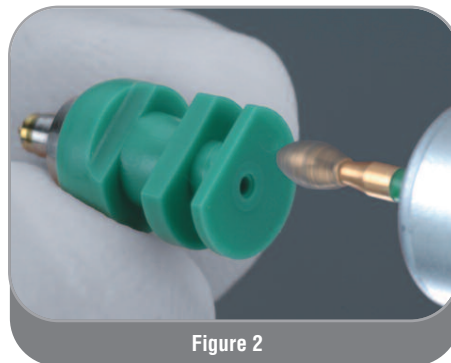


Figure 2

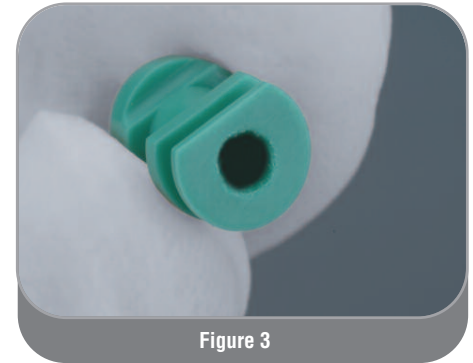


Figure 3



Figure 4

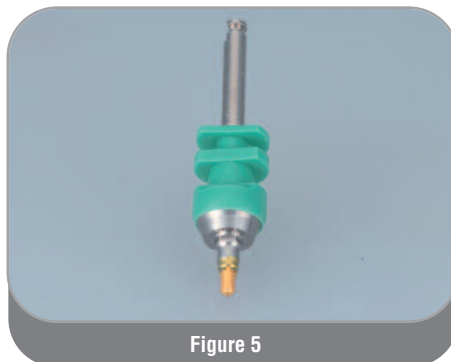


Figure 5

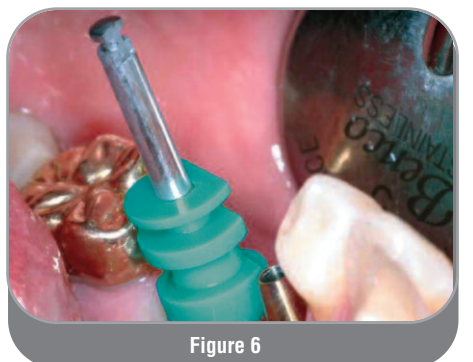


Figure 6