



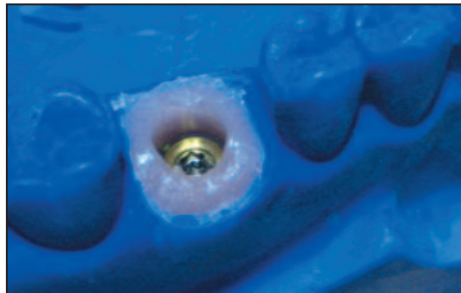
BIOMET 3i™ Scan Caps To Design

BellaTek® Abutments

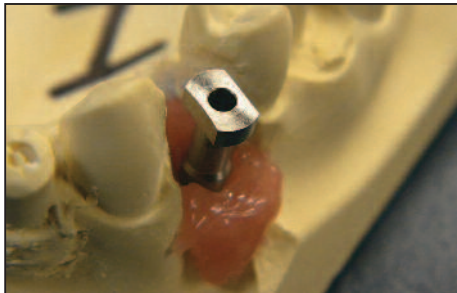
A Simple Way To Provide Your Customers With Aesthetic, Precise BellaTek® Abutments.



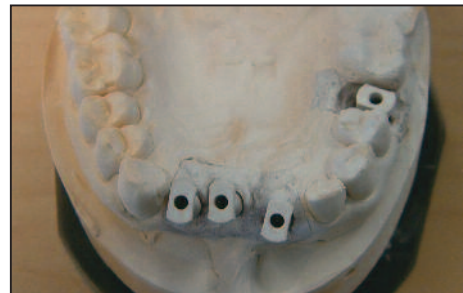
- New scanning device allows for accurate scans on fixture-level impression models
- Scan caps for designing BellaTek Abutments using the CAD/CAM system in your laboratory
- All BellaTek Certain® Abutments can be created from just two scan caps
- Electronic order submission allows for quicker turnaround



STEP 1: Pour the model.



STEP 2: Attach the scan cap to the analog.



STEP 3: Spray the model with an appropriate anti-reflective spray.

STEP 4: Scan the model with the CAD/CAM system of your choice.

STEP 5: Electronically submit model to the BellaTek Production Facility.

STEP 6: Receive an aesthetic, precise BellaTek Abutment.



BIOMET 3i
 4555 Riverside Drive
 Palm Beach Gardens, FL 33410
 1-888-800-8045
 Outside The U.S.: +1-561-776-6700
 Fax: +1-561-776-1272
 www.biomet3i.com

EC REP
 BIOMET 3i
 Europe, Middle East & Africa
 WTC Alameda Park, Ed. 1, Planta 1ª
 Pl. de la Pau, s/n
 08940, Cornellà de Llobregat
 (Barcelona) Spain
 Phone: +34-93-470-55-00
 Fax: +34-93-371-78-49

BellaTek and Certain are registered trademarks and BellaTek design and Providing Solutions - One Patient At A Time and design are trademarks of BIOMET 3i LLC. BIOMET 3i and design are trademarks of BIOMET, Inc. ©2012 BIOMET 3i LLC.



Join Us



Follow Us



Watch Us



Download It



INST 1182
 REV A 06/14